

Multiple Choice

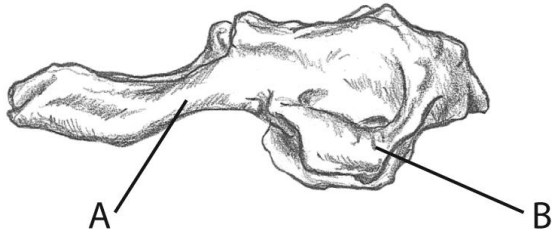
Identify the choice that best completes the statement or answers the question.

- _____ 1. Which abdominal muscle plays a major role in forced exhalation?
- rectus abdominis
 - external oblique
 - internal oblique
 - transverse abdominis
- _____ 2. Which section of the vertebral column is comprised of 12 vertebrae?
- cervical
 - thoracic
 - lumbar
 - coccyx
- _____ 3. The first rib is deep to which structure along the anterior thorax?
- clavicle
 - sternum
 - acromion
 - coracoid process
- _____ 4. Which muscle acts as a synergist with the internal oblique during flexion of the vertebral column?
- rotatores
 - semispinalis capitis
 - longissimus
 - external oblique
- _____ 5. Which is the insertion of the quadratus lumborum?
- transverse processes of 2nd – 4th lumbar vertebrae
 - last rib, transverse processes of 1st – 4th lumbar vertebrae
 - spinous processes of 1st – 4th lumbar vertebrae
 - last rib, spinous processes of 1st – 4th lumbar vertebrae
- _____ 6. Which of the following is a part of the origin of the spinalis?
- posterior surface of ribs 1 - 10
 - transverse processes of the upper lumbar and lower thoracic vertebrae
 - spinous processes of the upper lumbar and lower thoracic vertebrae
 - posterior surface of ribs 4 - 12
- _____ 7. The edge of which muscle is especially useful in locating the suboccipitals?
- trapezius
 - splenius capitis
 - levator scapula
 - semispinalis capitis

Completion

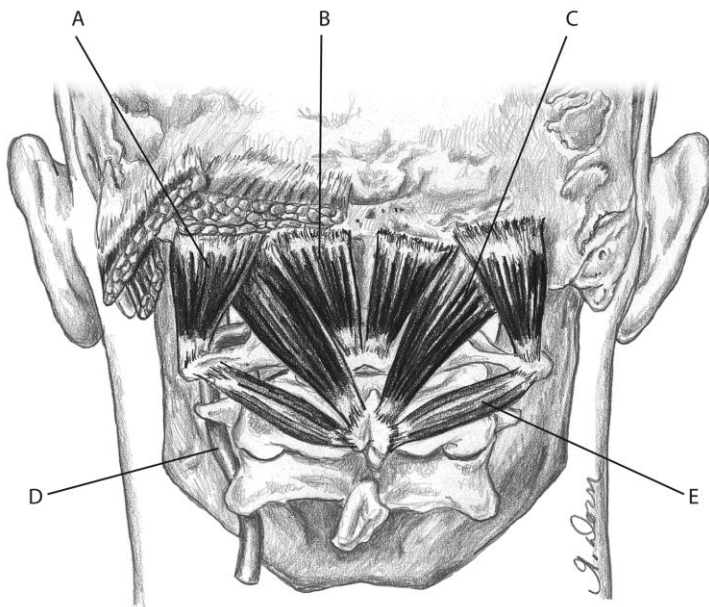
Complete each statement.

Please identify the following structure(s).



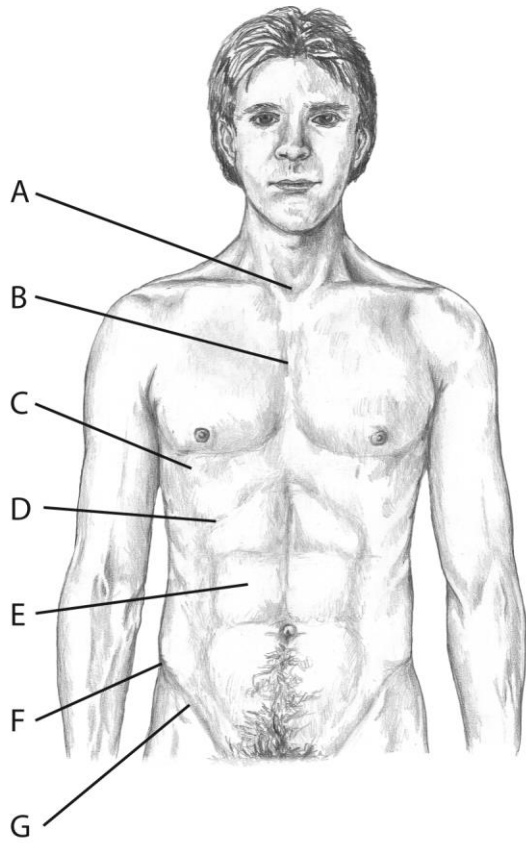
1. A
2. B

Please identify the following structure(s).



3. A
4. B
5. C
6. D
7. E
8. Passive rotation of the spine to the opposite side would _____ the rotatores.
9. Passive lateral flexion of the head would _____ the splenius cervicis.
10. Passive rotation of the vertebral column to the same side would _____ the external oblique.

Please identify the following structure(s).



11. A
12. B
13. C
14. D
15. E
16. F
17. G